



UniFlood C

BVP321 9LED 27K 220V 40

UniFlood C is a circular shaped, exterior-rated and cost-effective architectural LED floodlight that is designed for façade, landscape and outdoor flood lighting applications. The robust mechanical design and high-efficiency optical design make it ideal for illuminating multi-story exterior facades, bridges, landmarks and monuments. Available in white, monochromatic colors, RGB, RGBW and tunable white. Six different spread lenses ranging from narrow spot to wide flood and DMX512/RDM control option available to give architects and designers the freedom to explore a wide range of concepts and design with no limitations.

Warnings and Safety

- For outdoor use only

Product data

| General Information | |
|-------------------------|---------------------------------|
| Light source color | Warm white |
| Driver included | Yes |
| Optical cover/lens type | Polymethyl methacrylate lens |
| Control interface | - |
| Connection | Flying leads/wires |
| Cable | Cable 0.5 m without plug 3-pole |
| Protection class IEC | Safety class I (I) |
| CE mark | CE mark |

| Operating and Electrical | |
|--------------------------|--------------|
| Input Voltage | 220 to 240 V |
| Input Frequency | 50 to 60 Hz |
| Power Factor (Min) | 0.9 |

| Controls and Dimming | |
|----------------------|----|
| Dimmable | No |

| Mechanical and Housing | |
|-----------------------------|-------------------|
| Housing Material | Aluminum die-cast |
| Optical cover/lens material | Tempered glass |
| Overall length | 143.5 mm |
| Overall height | 200 mm |
| Overall diameter | 180 mm |
| Color | Dark gray |

| Approval and Application | |
|------------------------------|--|
| Ingress protection code | IP66 [Dust penetration-protected, jet-proof] |
| Mech. impact protection code | IK08 [5 J vandal-protected] |

UniFlood C

Initial Performance (IEC Compliant)

| | |
|-------------------------------------|---------|
| Initial luminous flux (system flux) | 930 lm |
| Luminous flux tolerance | +/-10% |
| Initial LED luminaire efficacy | 44 lm/W |
| Init. Corr. Color Temperature | 2700 K |
| Init. Color Rendering Index | 80 |
| Initial input power | 21 W |
| Power consumption tolerance | +/-10% |

Application Conditions

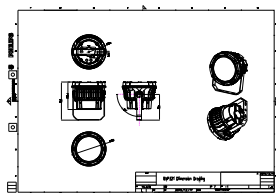
| | |
|---------------------------|---------------|
| Ambient temperature range | -40 to +50 °C |
|---------------------------|---------------|

Product Data

| | |
|---------------------------------|-------------------------|
| Full product code | 911401777162 |
| Order product name | BVP321 9LED 27K 220V 40 |
| Order code | 911401777162 |
| Numerator - Quantity Per Pack | 1 |
| Numerator - Packs per outer box | 6 |
| Material Nr. (12NC) | 911401777162 |
| Net Weight (Piece) | 2.366 kg |



Dimensional drawing



BVP321/322/323/324

