



UniFlood C

BVP321 9LED RGB 220V 30 DMX

UniFlood C is a circular shaped, exterior-rated and cost-effective architectural LED floodlight that is designed for façade, landscape and outdoor flood lighting applications. The robust mechanical design and high-efficiency optical design make it ideal for illuminating multi-story exterior facades, bridges, landmarks and monuments. Available in white, monochromatic colors, RGB, RGBW and tunable white. Six different spread lenses ranging from narrow spot to wide flood and DMX512/RDM control option available to give architects and designers the freedom to explore a wide range of concepts and design with no limitations.

Warnings and Safety

- For outdoor use only

Product data

General Information	
Light source color	Red, green and blue
Driver included	Yes
Optical cover/lens type	Polymethyl methacrylate lens
Control interface	Dynamic DMX/RDM
Connection	Flying leads/wires and 2 Push-in connector 4-pole
Cable	Cable 0.5 m without plug 3-pole and 2 Cables 0.5 m with connector 4-pole
Protection class IEC	Safety class I (I)
CE mark	CE mark

Operating and Electrical	
Input Voltage	220 to 240 V
Input Frequency	50 to 60 Hz
Power Factor (Min)	0.9

Controls and Dimming	
Dimmable	Yes

Mechanical and Housing	
Housing Material	Aluminum die-cast
Optical cover/lens material	Tempered glass
Overall length	143.5 mm
Overall height	200 mm
Overall diameter	180 mm
Color	Dark gray

Approval and Application	
Ingress protection code	IP66 [Dust penetration-protected, jet-proof]
Mech. impact protection code	IK08 [5 J vandal-protected]

UniFlood C

Initial Performance (IEC Compliant)

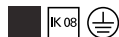
Initial luminous flux (system flux)	620 lm
Luminous flux tolerance	+/-10%
Initial LED luminaire efficacy	30 lm/W
Init. Corr. Color Temperature	- K
Init. Color Rendering Index	-
Initial input power	21 W
Power consumption tolerance	+/-10%

Application Conditions

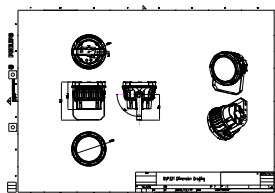
Ambient temperature range	-40 to +50 °C
---------------------------	---------------

Product Data

Full product code	911401777132
Order product name	BVP321 9LED RGB 220V 30 DMX
Order code	911401777132
Numerator - Quantity Per Pack	1
Numerator - Packs per outer box	6
Material Nr. (12NC)	911401777132
Net Weight (Piece)	2.366 kg



Dimensional drawing



BVP321/322/323/324

