



MASTER LEDtube Mains T5

MASTER LEDtube 1200mm HE 16.5W 865 T5

The new Philips Master LEDtube Mains T5 brings simplicity to your lighting project. You don't need to pay attention to the driver technology anymore. Thanks to a unique design, Philips MASTER LEDtube Mains T5 installs in luminaires operating on mains power connection. So simple to operate! ;Perfectly safe, reliable & easy to install Philips MASTER LEDtube Mains T5 is the ideal alternative to standard fluorescent tubes to maximize value over lifetime with high energy saving and lower maintenance costs.

Product data

General information		Operating and electrical	
Cap-Base	G5 [G5]	Input Frequency	50 to 60 Hz
EU RoHS compliant	Yes	Power (Rated) (Nom)	16.5 W
Nominal Lifetime (Nom)	50000 h	Lamp Current (Max)	180 mA
Switching Cycle	200000X	Lamp Current (Min)	70 mA
Technical Type	16.5-28W	Starting Time (Nom)	0.5 s
		Warm Up Time to 60% Light (Nom)	0.5 s
		Power Factor (Nom)	0.9
		Voltage (Nom)	100-240 V
Light technical		Temperature	
Color Code	865 [CCT of 6500K]	T-Ambient (Max)	45 °C
Beam Angle (Nom)	200 °	T-Ambient (Min)	-20 °C
Luminous Flux (Nom)	2500 lm	T-Storage (Max)	65 °C
Color Designation	Cool Daylight	T-Storage (Min)	-40 °C
Correlated Color Temperature (Nom)	6500 K	T-Case Maximum (Nom)	70 °C
Luminous Efficacy (rated) (Nom)	151.00 lm/W		
Color Consistency	<6		
Color Rendering Index (Nom)	80		
LLMF At End Of Nominal Lifetime (Nom)	70 %		

MASTER LEDtube Mains T5

Controls and dimming

Dimmable	No
----------	----

Mechanical and housing

Bulb Finish	Frosted
Bulb Material	Glass
Product Length	1200 mm
Bulb Shape	Tube, double-ended

Approval and application

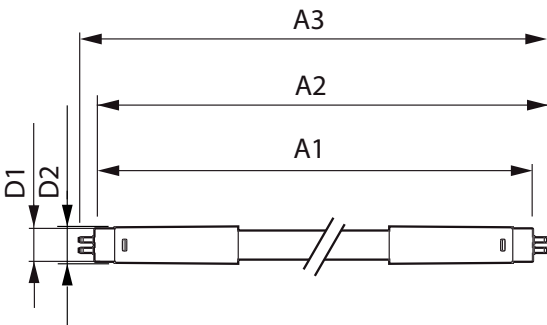
Energy Saving Product	Yes
Approval Marks	RoHS compliance CE marking KEMA Keur certificate

Energy Consumption kWh/1000 h	17 kWh
-------------------------------	--------

Product data

Full product code	871869978353200
Order product name	MASTER LEDtube 1200mm HE 16.5W 865 T5
EAN/UPC - Product	8718699783532
Order code	929002421108
Numerator - Quantity Per Pack	1
Numerator - Packs per outer box	10
Material Nr. (12NC)	929002421108
Copy Net Weight (Piece)	0.215 kg

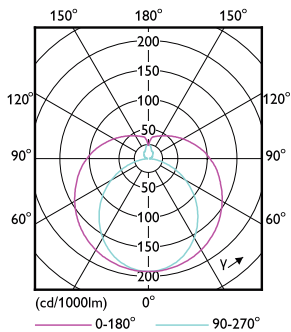
Dimensional drawing



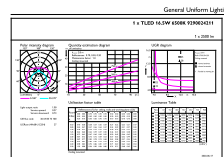
MASTER LEDtube 1200mm HE 16.5W 865 T5

Product	D1	D2	A1	A2	A3
MASTER LEDtube 1200mm HE 16.5W 865 T5	15.8 mm	19 mm	1149 mm	1156.1 mm	1163.2 mm

Photometric data



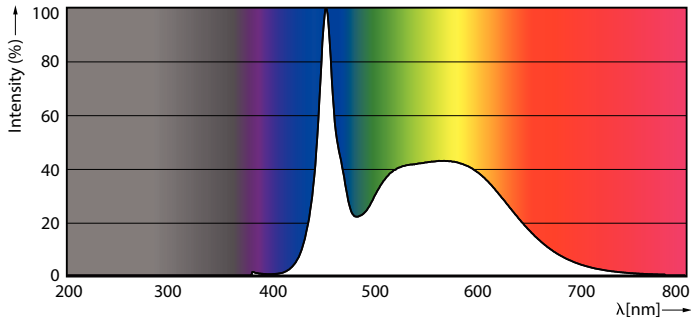
LEDtube MAS 8W G5 1000lm



LEDtube MAS 16,5W G5 2500lm 865

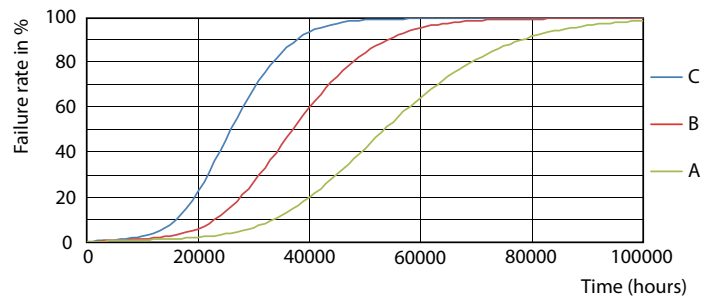
MASTER LEDtube Mains T5

Photometric data



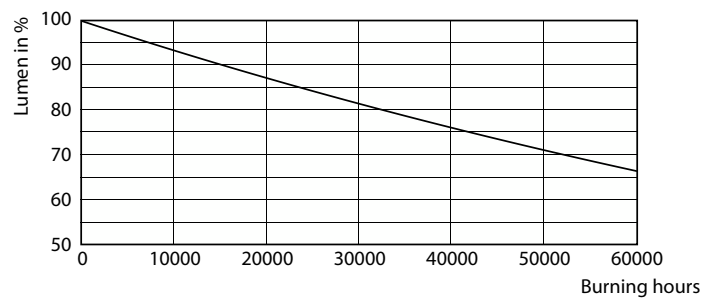
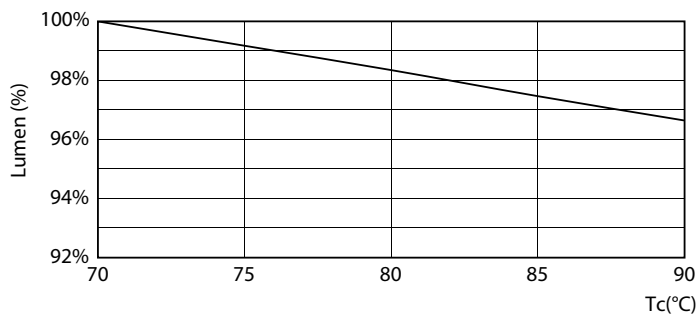
LEDtube MAS 16,5W G5 2500lm 865

Lifetime



Life Expectancy Diagram

LEDtube 50K FailureRate-LED



LEDtube 16,5W 50K LumenVsTc

Lumen Maintenance Diagram

MASTER LEDtube Mains T5

Lifetime



LEDtube 50K LifetimeVsTc-LED

