



# TrueForce LED Industrial and Retail (Highbay – HPI/SON/HPL)

## TrueForce Core HB 200-160W E40 865 WB GM

Philips TrueForce LED Industrial and Retail lamps give you a quick and easy payback solution to replace HID lamps in Highbay application. The solution gives you the LED benefits of energy-efficiency and long-lifetime, plus they come for a low initial investment. With unique lamp design and compatibility, you can directly retrofit HID lamps with TrueForce LED lamps without changing the fixtures or gear. Multiple beam angle options and high colour rendering index enhance the lighting distribution while creating a comfortable, safe and high productivity environment.

### Warnings and Safety

• EM version requires an EM ballast to operate. Please refer to the installation guide or consult a Philips Lighting representative.

### Product data

General Information		Operating and Electrical	
Cap-Base	E40 [ E40]	Luminous Flux (Nom)	20000 lm
EU RoHS compliant	Yes	Color Designation	Cool Daylight
Nominal Lifetime (Nom)	25000 h	Correlated Color Temperature (Nom)	6500 K
Switching Cycle	50000X	Luminous Efficacy (rated) (Nom)	125.00 lm/W
Technical Type	160-400W	Color Consistency	<6
		Color Rendering Index (Nom)	80
		LLMF At End Of Nominal Lifetime (Nom)	70 %
Light Technical			
Color Code	865 [ CCT of 6500K]	Input Frequency	50 to 60 Hz
Beam Angle (Nom)	130 °		

# TrueForce LED Industrial and Retail (Highbay – HPI/SON/HPL)

Power (Rated) (Nom)	160 W
Lamp Current (Nom)	1900 mA
Wattage Equivalent	400 W
Starting Time (Nom)	0.7 s
Warm Up Time to 60% Light (Nom)	0.7 s
Power Factor (Nom)	0.9
Voltage (Nom)	110-277 V

## Temperature

T-Case Maximum (Nom)	100 °C
----------------------	--------

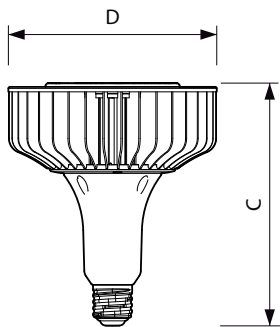
## Controls and Dimming

Dimmable	No
----------	----

## Mechanical and Housing

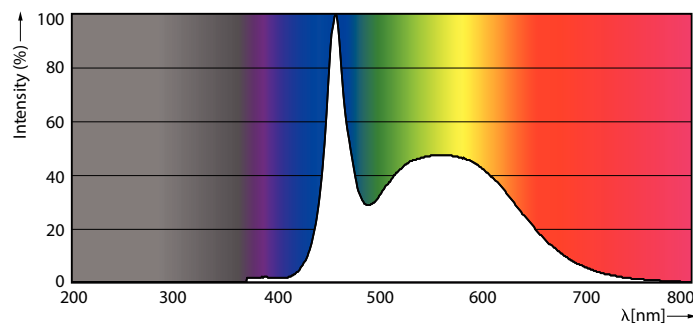
Bulb Shape	T15 [ Diameter: 1.97 inch]
------------	----------------------------

## Dimensional drawing



Bulb T50 180-400W 20000lm 6500K E40 ND

## Photometric data



400W E40 T50

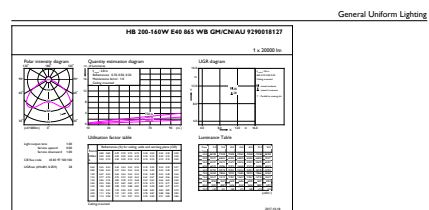
## Approval and Application

Energy Consumption kWh/1000 h	- kWh
-------------------------------	-------

## Product Data

Full product code	871869676938600
Order product name	TrueForce Core HB 200-160W E40 865 WB
	GM
EAN/UPC - Product	8718696769386
Order code	929001812708
Numerator - Quantity Per Pack	1
Numerator - Packs per outer box	2
Material Nr. (12NC)	929001812708
Net Weight (Piece)	1.300 kg

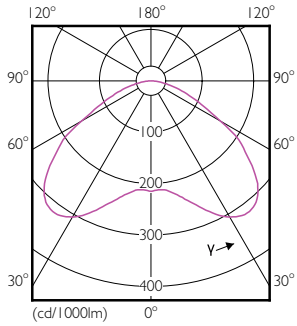
Product	D	C
TrueForce Core HB 200-160W E40 865 WB GM	211 mm	252 mm



400W E40 T50 WB 130D 865 6500K

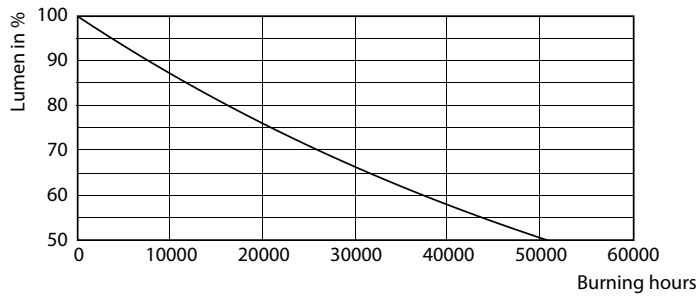
# TrueForce LED Industrial and Retail (Highbay – HPI/SON/HPL)

## Photometric data

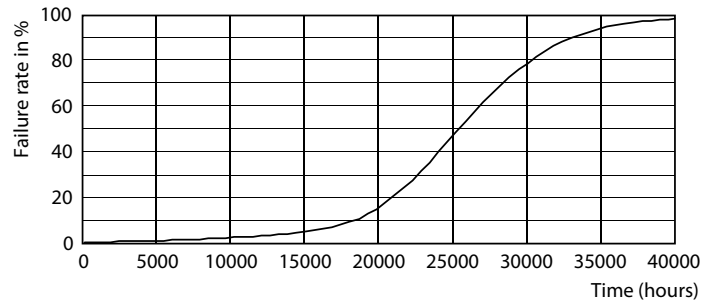


400W E40 T50 130D 865 6500K

## Lifetime



250W E40 Others FR



250W E40 Others FR

