



# The new generation of Mains T5 LEDtube lighting

## MASTER LEDtube Mains T5

The new Philips Master LEDtube Mains T5 brings simplicity to your lighting project. You don't need to pay attention to the driver technology anymore. Thanks to a unique design, Philips MASTER LEDtube Mains T5 installs in luminaires operating on mains power connection. So simple to operate! Perfectly safe, reliable & easy to install Philips MASTER LEDtube Mains T5 is the ideal alternative to standard fluorescent tubes to maximize value over lifetime with high energy saving and lower maintenance costs.

### Benefits

- Reduced operational cost thanks to lower energy consumption
- Lower maintenance cost thanks to longer lifetime than conventional lamps
- Fastest and easiest way to upgrade existing luminaires to LEDtechnology; completely safe product and installation process

### Features

- Replacement of existing T5 lamps: operates with mains power connection
- Energy savings compared with fluorescent tubes
- Long lifetime
- No mercury

### Application

- Offices, shops, classrooms
- Industrial facilities and warehouses

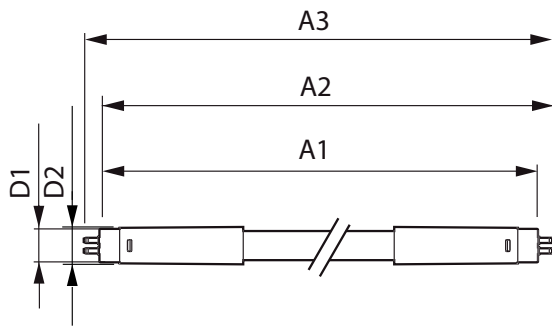
# MASTER LEDtube Mains T5

## Versions



LEDtube G5

## Dimensional drawing



Product	D1	D2	A1	A2	A3
MASTER LEDtube 1200mm	15.8 mm	19 mm	1149 mm	1156.1 mm	1163.2 mm
HE 16.5W 865 T5					

