



AmphiLux recessed – light up your outdoor social areas

AmphiLux, recessed

People want to spend more quality time outdoors with family and friends. The AmphiLux recessed spotlight range is designed to enhance outdoor social areas (gardens, terraces, fountains, waterfalls, etc.) with architectural lighting. AmphiLux is a family of LED spots featuring a stunning, sleek Italian design with a stylish chrome finish. These solutions can be used under water and in semi-wet and dry environments. Available in Micro, Mini and Compact sizes, the range offers a choice of dynamic white-light and colored-light versions for maximum flexibility in tasteful flood and accent lighting.

Benefits

- All mono-color products are powered via a standard 12 V DC driver, making them safe in human-occupied water and extremely easy to install.
- The dynamic color spots provide a rich color spectrum (RGBW), from fully saturated to soft pastel colors; the color-temperature-variation spots create a variety of white tones.
- The use of LEDs and quality optics make the AmphiLux spots very energy-efficient, with energy savings of up to 80% possible, depending on the application.

Features

- Sleek, attractive design
- Highly efficient, low-power LED spots
- Every spot available in the mono-colors high-quality white (2700, 4000, 6000 K) and blue
- Mini and Compact spots also available in dynamic versions with RGBW or color-temperature variation
- IP68-rated for underwater use, but also suitable for dry environments
- Very installation-friendly due to 12 V DC driver system for all mono-color spots

AmphiLux, recessed

Application

- Architectural flood and accent lighting in fountains, waterfalls, gardens or on buildings

Specifications

Type	BBD400 Micro (1 x LED, Mono color version) BBC400 Micro (1 x LED, Mono color version)* BBD410 Mini (4 x LED, Mono and Dynamic color version) BBD420 Compact (12 x LED, Mono and Dynamic color version) *special plastic version for harsh environments
Light source	Non replaceable LED-module
Power	Micro versions: 1.5 W Mini version (Mono color): 5 W Mini version (Dynamic color): 4 W Compact version (Mono color): 15 W Compact version (Dynamic color): 12 W
Beam angle	Micro versions: 10, 20 and 35° Mini and Compact versions: 10 and 40°
Luminous flux	Micro versions: +/- 60 lm Mini version: +/- 240 lm Compact version: +/- 720 lm
Correlated Color	2700, 4000 and 6000 K for the Mono color versions
Temperature	2700 - 6000 K for tunable white
Color Rendering Index	> 80 (2700 and 4000 K) > 70 (6000 K)
Maintenance of lumen output - L90	43.000 hours at 35°C
Maintenance of lumen output - L70	147.000 hours at 35°C

Maintenance of lumen output - L50	> 200.000 hours at 35°C
Operating temperature range	-20 to +35°C
Driver	Built-in for Mono color versions External (DMX-RDM driver) for Dynamic color versions
Mains voltage	12 V DC for Mono color versions
Material	Housing: - BBD versions: chromed brass - BBC version: ertacetal Optical cover: hardened glass
Corrosion resistance	For BBD versions: - Salt water resistant up to 35gr/L salinity - Chlorine resistant if water has a stable PH level between 6.8 and 8 - If these levels are exceeded, use the BBC range of products
Color	BBD versions: chrome BBC versions: white
Connection	Flying leads
Installation	Recessed mounting. For in ground (concrete etc.) use the matching ZBD400 RMB recessed box
Accessories	Recessed box, ZBD400 RMB

Versions



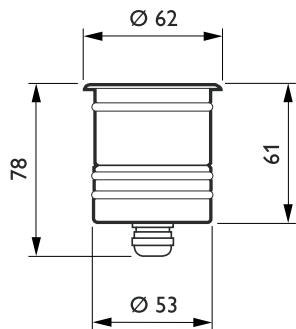
AmphiLux BBD410 recessed Mini spotlight with narrow or medium beam angle



AmphiLux BBD420 recessed Compact spotlight with narrow or medium beam angle

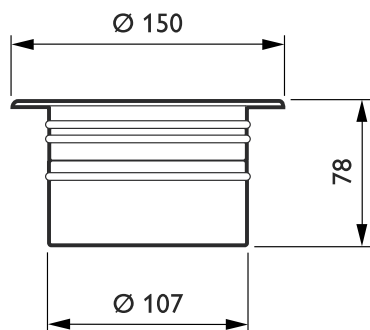
AmphiLux, recessed

Dimensional drawing



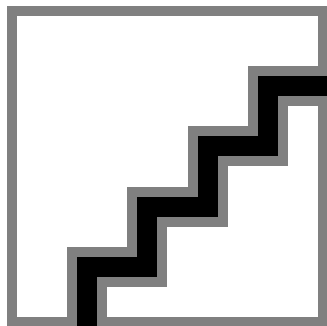
AmphiLux BBD/BVD400

AmphiLux BBD/BVD400

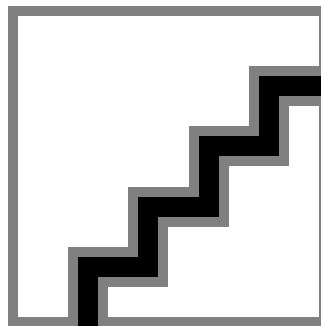


AmphiLux BBD/BVD400

Product details



AmphiLux BBD410 recessed Mini
spotlight with recessed box ZBD401



AmphiLux BBD420 recessed Compact
spotlight with recessed box ZBD402

AmphiLux, recessed

Accessories



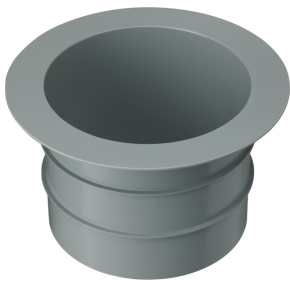
Recessed mounting box for
AmphiLux BBD/BBC400

Ordercode 910930018718



Recessed mounting box for
AmphiLux BBC410

Ordercode 910930027818



Recessed mounting box for
AmphiLux BBD420

Ordercode 910930027918



ZBD401 power supply unit 60 W

Ordercode 910930028718

Approval and Application

Mech. impact protection code IK10

Controls and Dimming

Dimmable No

General Information

CE mark CE mark

Optical cover/lens type No

Driver included No

Lamp family code LED-HB

Light source replaceable No

Lifetime to 50% luminous flux 200000

Lifetime to 70% luminous flux 147000

Lifetime to 90% luminous flux 43000

Over Time Performance (IEC Compliant)

Driver failure rate at 5000 h 1

General Information

order code	Light source color	Number of light sources	Optic type	Product Family Code
910503673318	Cool white	1	Medium beam angle 20°	BBD400
910503673918	Warm white	1	Medium beam angle 35°	BBD400
910503675118	Warm white	1	Medium beam angle 35°	BBC400
910503683018	Warm white	4	Narrow beam angle 10°	BBD410
910503683118	Warm white	4	Medium beam angle 40°	BBD410
910503683318	Neutral white	4	Medium beam angle 40°	BBD410
910503683518	Cool white	4	Medium beam angle 40°	BBD410
910503686018	Warm white	12	Narrow beam angle 10°	BBD420

Initial Performance (IEC Compliant)

order code	Init. Corr. Color Temperature	Init. Color Rendering Index	Initial luminous flux	order code	Init. Corr. Color Temperature	Init. Color Rendering Index	Initial luminous flux
910503673318	6000	-	65	910503683118	2700	80	220
910503673918	2700	80	55	910503683318	4000	80	240
910503675118	2700	80	55	910503683518	6000	-	250
910503683018	2700	80	220	910503686018	2700	80	660

AmphiLux, recessed

